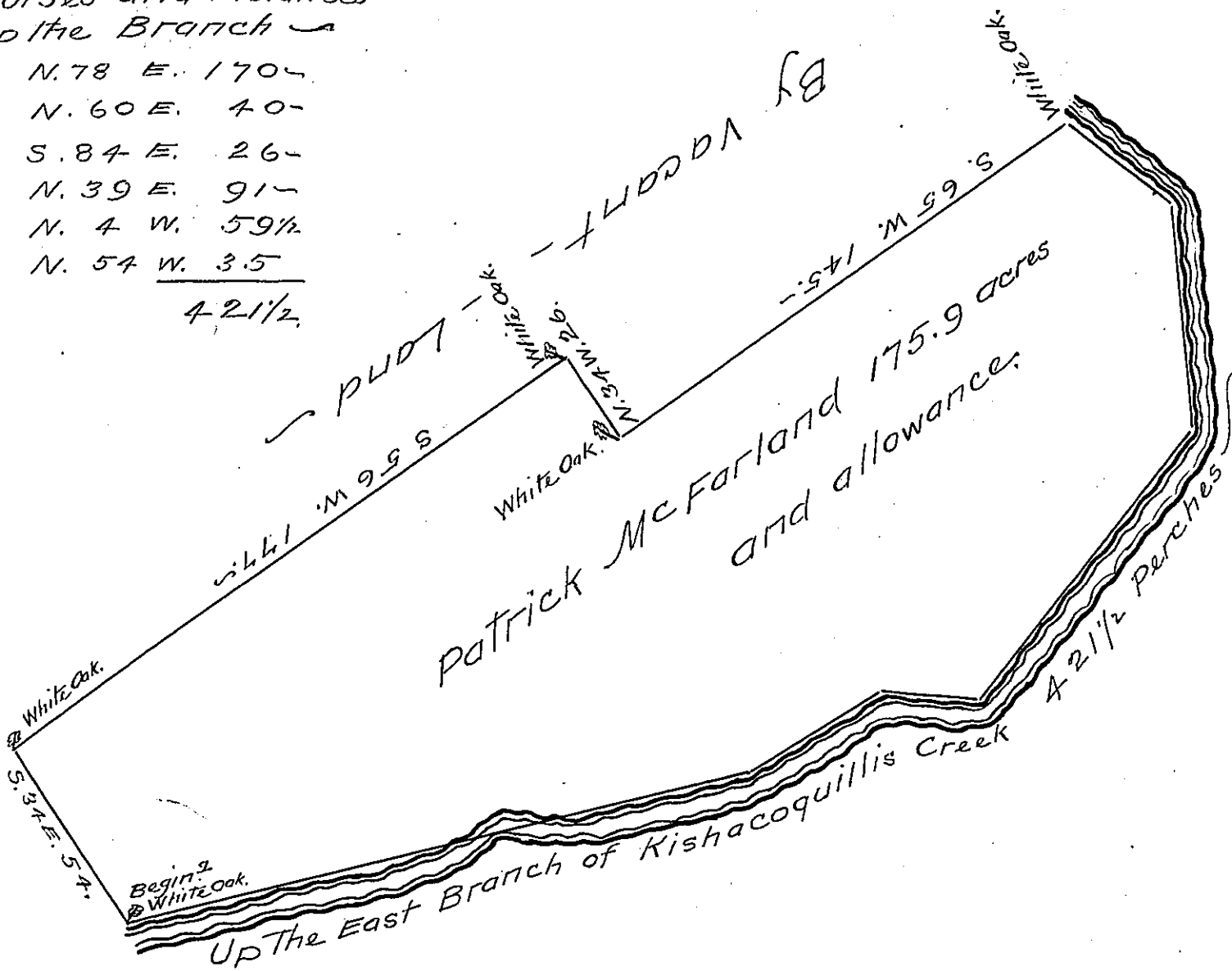


Courses and Distances  
up the Branch

N. 78 E. 170-  
N. 60 E. 40-  
S. 84 E. 26-  
N. 39 E. 91-  
N. 4 W. 59 1/2  
N. 54 W. 3.5  
42 1/2



The Draught of a Tract of Land called Fairland situate on the East (formerly called the north) Branch of Kishacoquillis Creek in the County of Cumberland Cont<sup>g</sup>. One Hundred Seventy Five acres one Hundred Fifty Eight Perches with the usual allowance of six acres <sup>2</sup>/<sub>100</sub> Cent for Roads. resurvey'd the Twelfth day of April A.D. 1766 - For Patrick McFarland In Pursuance of a Warrant from the Hon<sup>ble</sup> the Proprietaries bearing Date at Philad<sup>a</sup> the 3<sup>d</sup> day of February Anno Dom 1755

Wm. Maclay D.S.

To John Lukens Esq<sup>r</sup> Sur. Gen<sup>l</sup> of Pennsylvania

Now in Armagh Township Mifflin County

IN TESTIMONY that the above is a copy of the original remaining on file in the Department of Internal Affairs of Pennsylvania, made conformably to an Act of Assembly approved the 16th day of February, 1833, I have hereunto set my Hand and caused the Seal of said Department to be affixed at Harrisburg, this fourteenth day of December 1905.

Loach D. Brown  
Secretary of Internal Affairs.